

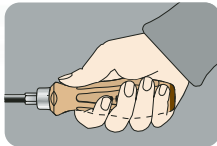
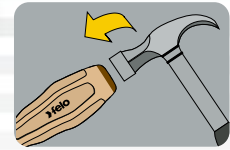


**Leather cap to protect against splintering**

*Lederkappe als Splitterschutz*

**full length blade**

*Durchgehende Klinge*



**ergonomic handle**

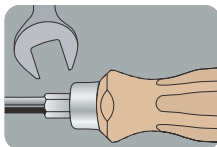
*ergonomische, ballige Griffkontur*

**Handle made of hard beechwood**

*Griff aus besonderem Buche-Hartholz*

## Commitment to fine, traditional hand tools Serie 330

*Handwerklicher Tradition verpflichtet*

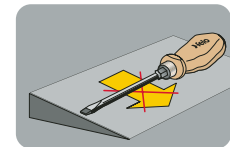


**Forged hexagon bolster**

*Angeschmiedeter Sechskant als Schlüsselhilfe*

**anti-roll handle design**

*Griffkopf mit Abrollschutz*



**blades manufactured from chrome-molybdenum-vanadium steel**

*Klingen aus spezieller Chrom-Molybdän-Vanadium-Legierung*

**full length blade**

*durchgehende Klinge, schlagfest*

**superior torque which exceeds DIN and ISO requirements by up to 100%**

*Beste Leistungsdaten, bis zu 100% über DIN-Werten*

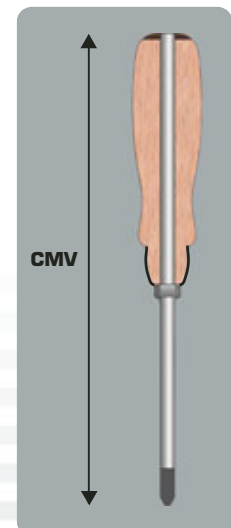
**EAN code on every product**

*EAN-Code auf jedem Werkzeug*

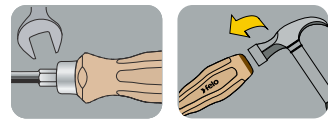
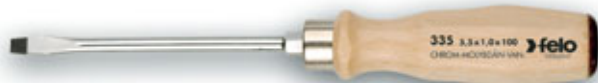


**Chrome-plated blade with black tip**

*Mattverchromt mit Black-Tip*

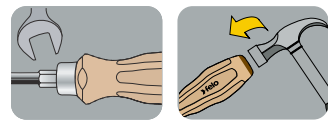


# 335



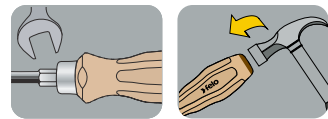
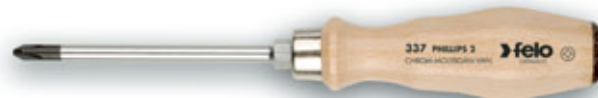
								Item No		EAN-Code
<b>3,5 x 0,6</b>	75	95	24	4,5	12			<b>335 035 90</b>	47	40 07157 18031 5
<b>4,5 x 0,8</b>	90	95	24	4,5	12			<b>335 045 90</b>	55	40 07157 18032 2
<b>5,5 x 1,0</b>	100	100	24	5,5	12			<b>335 055 90</b>	72	40 07157 18036 0
<b>7,0 x 1,2</b>	125	110	30	6,0	12			<b>335 065 90</b>	113	40 07157 18040 7
<b>9,0 x 1,2</b>	150	120	32	8,0	12			<b>335 080 90</b>	160	40 07157 18043 8
<b>10,0 x 1,6</b>	175	125	34	9,0	6			<b>335 100 90</b>	184	40 07157 18047 6
<b>12,0 x 2,0</b>	200	125	34	9,0	6			<b>335 120 90</b>	232	40 07157 18050 6

# 336



PZ							Item No		EAN-Code
<b>1</b>	80	95	24	4,5	12		<b>336 102 90</b>	47	40 07157 18060 5
<b>2</b>	100	110	30	6,0	12		<b>336 203 90</b>	88	40 07157 18061 2
<b>3</b>	150	120	32	8,0	6		<b>336 305 90</b>	163	40 07157 18062 9

# 337



PH							Item No		EAN-Code
<b>1</b>	80	95	24	4,5	12		<b>337 102 90</b>	45	40 07157 18063 6
<b>2</b>	100	110	30	6,0	12		<b>337 203 90</b>	88	40 07157 18067 4
<b>3</b>	150	120	32	8,0	6		<b>337 305 90</b>	164	40 07157 18071 1





**335**



**Set 5-pcs / Satz 5-tlg**

**Item No**

**335 951 98**



592

**EAN-Code**

40 07157 22155 1

(3 x) **335:** 5,5 x 100 / 7,0 x 125 / 9,0 x 150

(2 x) **337:** PH 1 x 80 / PH 2 x 100



**335**



**Set 7-pcs / Satz 7-tlg**

**Item No**

**335 971 98**



714

**EAN-Code**

40 07157 18108 4

(4 x) **335:** 4,5 x 90 / 5,5 x 100 / 7,0 x 125 / 9,0 x 150

(2 x) **337:** PH 1 x 80 / PH 2 x 100

(1 x) **336:** PZ 2 x 100



**490****Awl / Rundahle**

60 mm 60 32 4 mm 12

**Item No****EAN-Code****490 041 10**

36

40 07157 31078 1

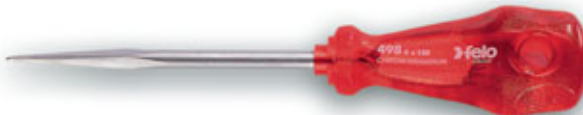
**493****Awl / Rundahle**

100 mm 80 34 6 mm 12

**Item No****EAN-Code****493 063 10**

72

40 07157 23006 5

**498****Reamer / Aufreiber**

100 mm 80 34 6 mm 12

**Item No****EAN-Code****498 063 10**

73

40 07157 23013 3

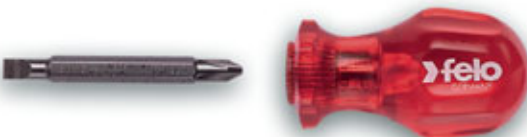
**494****Tacklifter / Reißzweckenheber**

100 mm 80 34 12

**Item No****EAN-Code****494 003 30**

75

40 07157 24022 4

**326****Reversible-Blade Screwdriver**

12

**Item No****EAN-Code****326 965 10**

55

40 07157 31068 2

*Umsteckschraubendreher*

5,5 - PH 2 x 60 mm

**dto. on card / auf Karte**

12

**326 965 11**

66

40 07157 18104 6